

— 5 1 0 —
N. PACIFIC COAST HWY
REDONDO BEACH CA 90277

Retail/Office | **FOR SALE**

Court Appointed Fiduciary Sale



5 1 0
N. PACIFIC COAST HWY
REDONDO BEACH CA 90277

Retail/Office | FOR SALE

Property Information

PROPERTY HIGHLIGHTS

- ▶ Small, very visible commercial building on busy Pacific Coast Highway!
- ▶ Abundant parking accessible from both PCH and rear parking lot on Guadalupe Ave.

LOCATION HIGHLIGHTS

- ▶ Located on the busiest commercial corridor and just 5 blocks from the beach, Pacific Coast Highway offers high traffic counts and strong visibility. Whole Foods and other great retailers are nearby.

Asking Price	\$1,100,000
Price/SF	\$916.67
Total Building SF	±1,200 SF
Lot SF	±6,451 SF
Year Built	1954
Parking Ratio	6.3:1,000
APN	7503-006-008



**CONTACT
FOR MORE
INFORMATION**

COLLEEN CAREY
626.240.2782
ccarey@lee-associates.com
License ID 01258120

ROBERT LEVEEN
213.995.6684
robert.leeven@lee-associates.com
License ID 01476685

LEE & ASSOCIATES
COMMERCIAL REAL ESTATE SERVICES
PASADENA

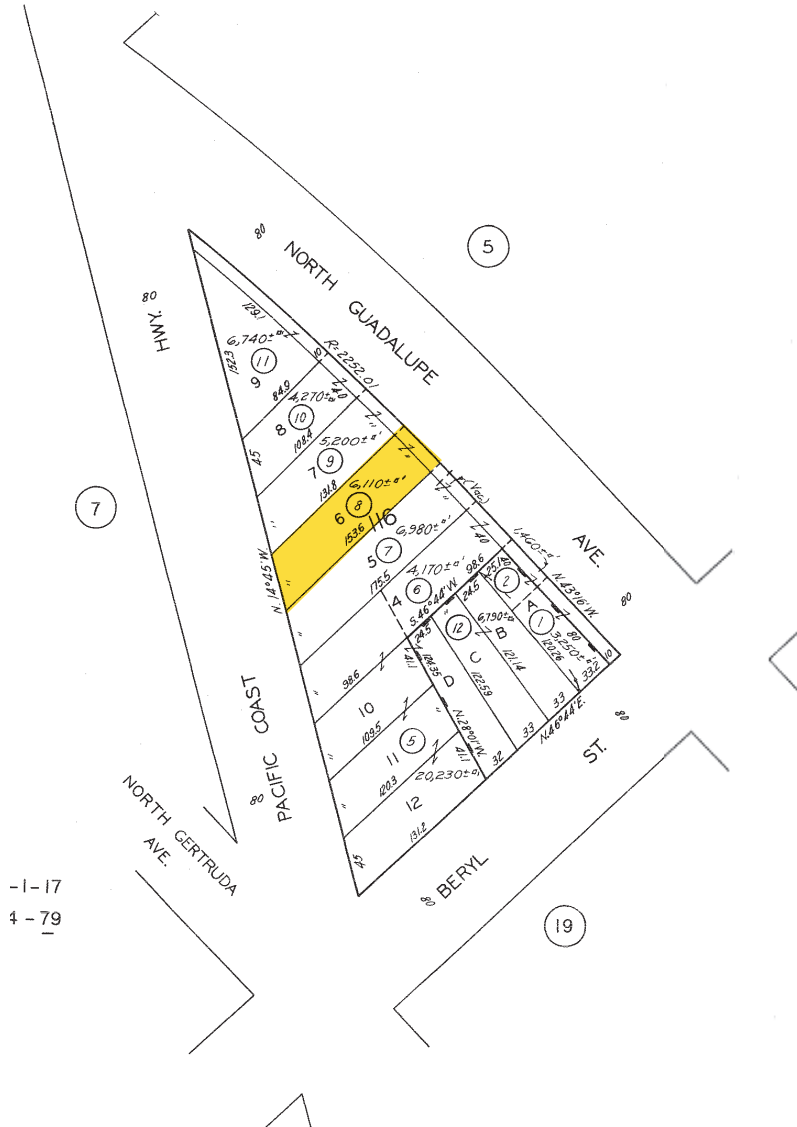
This information supplied herein is from sources we deem reliable. It is provided without any representation, warranty, or guarantee, expressed or implied as to its accuracy. Prospective Buyer or Tenant should conduct an independent investigation and verification of all matters deemed to be material, including, but not limited to, statements of income and expenses. Consult your attorney, accountant, or other professional advisor.

510

N. PACIFIC COAST HWY
REDONDO BEACH CA 90277

Retail/Office | **FOR SALE**

Parcel Map & Aerial



CONTACT
FOR MORE
INFORMATION

COLLEEN CAREY
626.240.2782
ccarey@lee-associates.com
License ID 01258120

ROBERT LEVEEN
213.995.6684
robert.leeven@lee-associates.com
License ID 01476685

LEE & ASSOCIATES
COMMERCIAL REAL ESTATE SERVICES
PASADENA

This information supplied herein is from sources we deem reliable. It is provided without any representation, warranty, or guarantee, expressed or implied as to its accuracy. Prospective Buyer or Tenant should conduct an independent investigation and verification of all matters deemed to be material, including, but not limited to, statements of income and expenses. Consult your attorney, accountant, or other professional advisor.

510
N. PACIFIC COAST HWY
REDONDO BEACH CA 90277

Retail/Office | **FOR SALE**

Exterior Photos



CONTACT
FOR MORE
INFORMATION

COLLEEN CAREY
626.240.2782
ccarey@lee-associates.com
License ID 01258120

ROBERT LEVEEN
213.995.6684
robert.leeven@lee-associates.com
License ID 01476685

LEE & ASSOCIATES
COMMERCIAL REAL ESTATE SERVICES
PASADENA

This information supplied herein is from sources we deem reliable. It is provided without any representation, warranty, or guarantee, expressed or implied as to its accuracy. Prospective Buyer or Tenant should conduct an independent investigation and verification of all matters deemed to be material, including, but not limited to, statements of income and expenses. Consult your attorney, accountant, or other professional advisor.

510

N. PACIFIC COAST HWY
REDONDO BEACH CA 90277

Retail/Office | **FOR SALE**

Demographics & Amenities Map

2022 Total Population



1 Mile	3 Miles	5 Miles
27,229	171,392	378,415

2022 Total Households



1 Mile	3 Miles	5 Miles
12,794	71,021	145,328

2022 Average Household Income



1 Mile	3 Miles	5 Miles
\$164,384	\$150,813	\$135,732

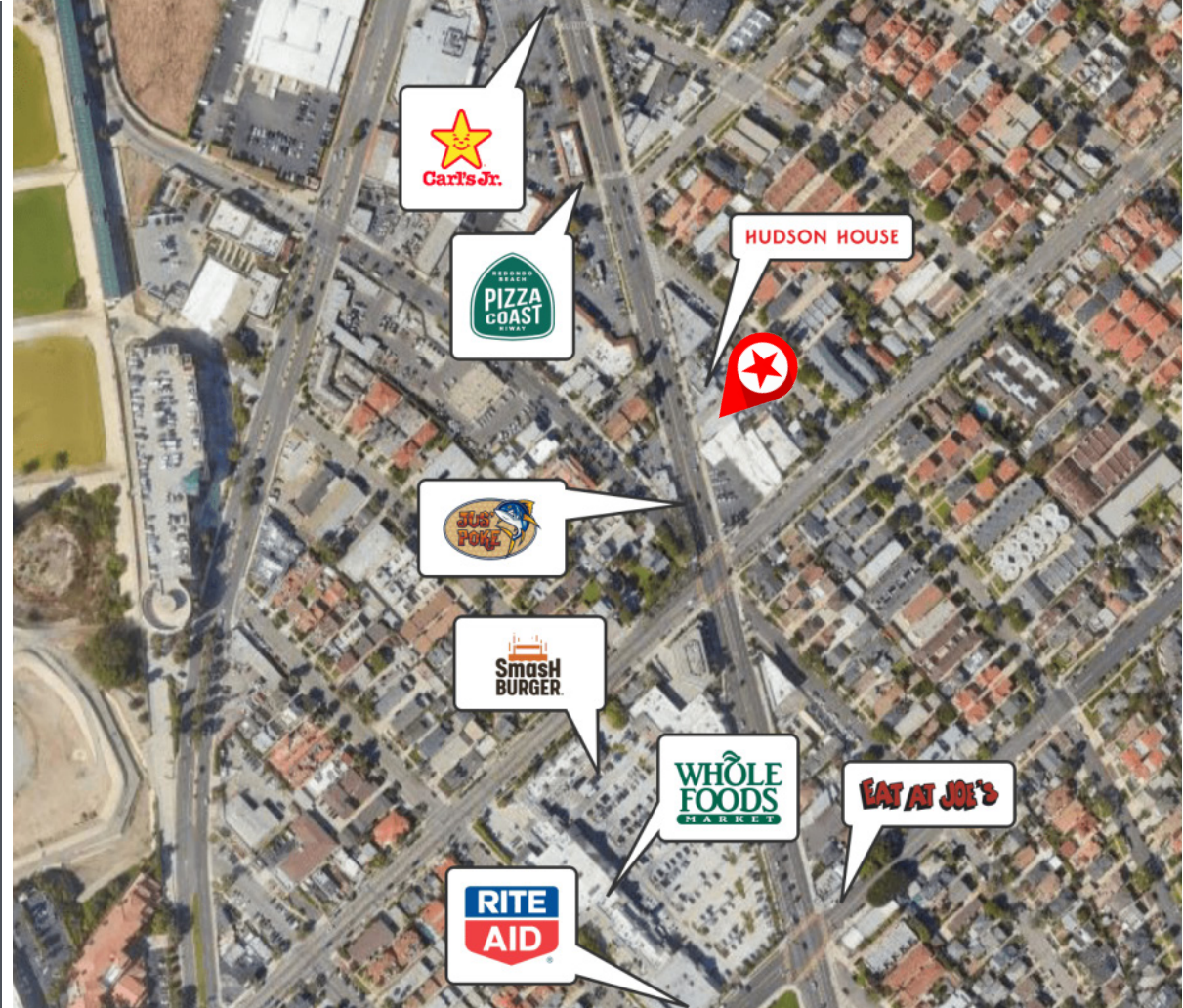
Walk Score



Daily Traffic Counts



Street	Cross Street	Distance	Count Year	Count
Pacific Coast Hwy	N Catalina Ave S	0.29 mi	2022	53,700



CONTACT
FOR MORE
INFORMATION

COLLEEN CAREY
626.240.2782
ccarey@lee-associates.com
License ID 01258120

ROBERT LEVEEN
213.995.6684
robert.leeven@lee-associates.com
License ID 01476685

LEE & ASSOCIATES
COMMERCIAL REAL ESTATE SERVICES
PASADENA

This information supplied herein is from sources we deem reliable. It is provided without any representation, warranty, or guarantee, expressed or implied as to its accuracy. Prospective Buyer or Tenant should conduct an independent investigation and verification of all matters deemed to be material, including, but not limited to, statements of income and expenses. Consult your attorney, accountant, or other professional advisor.

EXCLUSIVELY PRESENTED BY:

Colleen Carey

Founding Principal | License ID 01258120

D \ 626.240.2782

E \ ccarey@lee-associates.com

Robert Leveen

Senior Vice President | License ID 01476685

D \ 213.995.6684

E \ robert.leeven@lee-associates.com

LEE & ASSOCIATES® - PASADENA, INC.

1055 E. Colorado Blvd., Suite 330

Pasadena, CA 91106

Corporate ID 02059558

lee-pasadena.com



The information contained herein is obtained from sources believed to be reliable. However, we have not verified it and make no guarantees, warranties or representations as to the completeness or accuracy thereof. The presentation of this property is used for example and is submitted subject to errors, omissions, change of price or conditions, and is subject to prior sale, lease or withdrawal without notice.